

FACULTY AND STAFF DIRECTORY

Fond du Lac Tribal & Community College Board of Directors

Peter Defoe
 Kevin Dupuis
 Stephanie Hammitt, Chair
 Vince Martineau
 Mike Rabideaux
 Gene Reynolds
 Roger Smith
 Patty Petite
 Vern Zacher

Minnesota State Colleges and Universities Board of Trustees

Will Antell, Liaison to FDLTCC
 Duane Benson
 Michael Boulton
 Tyler Despins
 Cheryl Dickson, Treasurer
 Ivan Dusek
 Ruth Grendahl
 Clarence Hightower
 Robert H. Hoffman, Chair
 Vincent Ijioma
 Carol Ley
 Lew Morgan
 David Olson
 David Paskach
 Thomas Renier
 Anne Curme Shaw, Vice Chair
 Christopher Schultz

Fond du Lac Tribal & Community College Foundation Board of Directors

Debbie Briggs
 Debra Demianiuk
 Dixie Dorman
 John Gassert
 Ann Glumac
 Connie Hyde
 Thomas Jubie
 Paul M. Munson
 Joan Nurminen
 Del Prevost
 Kevin Stangl
 Randy Wagner
 Chuck Walt
 Kirk Wimmer
 Dale Wolf

Fond du Lac Tribal & Community College Administration

Day, Donald R.
 President
 Ed.D., University of North Dakota
 M.Ed., University of Minnesota-Duluth
 B.A., Bemidji State University

Anderson, Larry
 Vice President of Administration and Student Affairs
 M.S., University of Wisconsin-Superior
 B.S., University of Wisconsin-Superior

Gutting, Sister Therese
 Vice President of Academic Affairs
 Ed.D., Kennedy Western University
 M.S., University of Minnesota-Duluth
 B.S., Viterbo College

Skurich, Elliot
 Director of Fiscal Operations
 B.B.A., University of Minnesota-Duluth

Fond du Lac Tribal & Community College Faculty

*Faculty at outreach sites

Ahlgren, Marla
 English
 M.A., University of Minnesota-Duluth
 B.S., University of Minnesota-Duluth

Anderson, Michael
 Law Enforcement
 B.A., University of Minnesota-Duluth

Beckman, Brad
 Physical Education
 B.S., University of Wisconsin-Superior

Braxton-Brown, Jonah
 History/Political Science
 M.A., Candidate, Washington State University
 M.A., Eastern Washington University
 B.A., University of Redlands

Broughton, Nancy
 Library/Archives Director
 M.A., University of Wisconsin-Madison
 M.S., University of Nevada-Reno
 B.S., University of Wisconsin-Platteville

Bruning, Marcus
Health/Law Enforcement
B.A., Concordia College
Law Enforcement, Normandale Community
College

Dillon, Edward*
Math
M.S., University of Iowa
B.S., University of Iowa

Diver, Charlin F.
English
M.Ed., Harvard University
B.A., University of Minnesota-Duluth

Downwind, Bradley*
Anishinaabe Language

Drewlo, G. Scott
Corrections
B.S., St. Cloud State University

Estey, Carrie
Art
M.A., University of Arizona
B.S., Bemidji State University

Fairbanks, Tawana*
Psychology
M.Ed., University of Central Oklahoma
B.S., University of Central Oklahoma

Fellegy, Anna
English
Ph.D., University of Minnesota
M.A., University of Minnesota
B.S., University of Wisconsin-Superior

Foster, Sherrie
Speech/Theatre
M.A., University of Minnesota
B.S., University of Minnesota
B.A., St. Mary's College

Gillespie, Michael
Biology
M.S., University of Minnesota-Duluth
B.A., University of Minnesota-Duluth

Gittings, Ronald
Sociology
M.S., Indiana State University
B.A., Marian College

Gould, Roxanne*
American Indian Studies
Ed.D, University of Minnesota
M.A., University of South Dakota
B.A., University of South Dakota

Grace, Patricia
Counselor
M.S., Drake University
B.S., Mankato State University

Greeman, David
Law Enforcement
M.S., University of Wisconsin-Superior
B.A., College of St. Thomas
A.A., Normandale Community College

Grunenwold, Steven*
English
M.A., Bemidji State University
B.S., Bemidji State University

Gustafson, John
Computer Science/Electric Utility Technology
Ph.D., University of Minnesota
M.S., University of Minnesota
Bachelor of Physics, University of Minnesota

Hamilton, Cherie
Art
M.A., University of Illinois-Urbana
B.A., Western Washington University

Hanson, Anita
Counselor/Office for Students with Disabilities
M.A., University of Minnesota-Duluth
B.S., North Dakota State University

Hanson, Donald
Chemistry
M.S., University of Wisconsin-Superior
B.S., University of Minnesota-Duluth

Hedberg, Kathleen
Child Development
M.Ed., University of Minnesota-Duluth
B.S., University of Minnesota-Duluth

Heath, Mitzi*
Psychology
M.A., St. Mary's University

Henry, Peter*
English/Speech
B.A., Carleton College

- Holmes, Cynthia
Art
M.A.E., Rhode Island School of Design
B.F.A., Minneapolis School of Art and Design
- Jaakola, Elizabeth
Music/American Indian Studies
M.M., University of Minnesota-Duluth
B.M., University of Minnesota-Duluth
- Jarvinen, Donald
Human Services
M.S. University of Wisconsin-Superior
B.A., St. John's University
- Johnson, Douglas
Economics
M.A., University of Minnesota-Duluth
B.S., Minnesota State University-Mankato
- Johnson, Michele
English
M.A., Chapman University
B.E., Eastern Washington University
- Jones, Dan
Anishinaabe Language
B.S., Bemidji State University
A.A., Rainy River Community College
- Kallis, Bill
Counselor/Psychology
M.A., University of North Dakota
B.A., Minot State University
- Kamp, Adam
English
M.A., University of Iowa
B.A., Cornell College
- Kennedy, Jason
Geography/Business
M.S., Minnesota State University-Mankato
B.A., California State University-Sacramento
- Kleinke, Kristin
Music/Philosophy
M.M., University of Minnesota
M.A., Northwestern Lutheran Theological
Seminary
B.A., Gustavus Adolphus College
- Langhorst, Glenn
Geology/Physics
M.Ed., University of Minnesota-Duluth
B.A.S., University of Minnesota-Duluth
- Lemon, Charles
Law Enforcement
A.A., Hibbing Community College
- Lyons, Scott
Law Enforcement
B.A., University of Minnesota-Duluth
- Maciewski, Bryan Jon
Business/Marketing
M.B.A., Embry Riddle Aeronautical University
B.S., University of Maryland
A.A., St. Leo College
A.S., Community College of Air Force
- DeLille Martineau, Roxanne
Speech/Anthropology
M.S., University of Minnesota
B.S., University of Minnesota
A.A., Fond du Lac Tribal & Community College
- McBride, Kenneth*
Biology/Math
B.A., Purdue University
M.P.A., Indiana University
M.S.C., Indiana University
- Monson, Mary
Nursing
M.A., College of St. Scholastica
B.A., College of St. Scholastica
A.A., Normandale Community College
- Ness, Jean*
Psychology
Ed.D., University of Minnesota
M.A., University of St. Thomas
B.S., University of Minnesota
- Nicholson, Stuart*
Physics
Post Doc., State University of New York-Albany
Ph.D., University of Georgia
M.S., State University of New York-Albany
B.S., University of New York-Albany
- Olsen, Mark*
Physical Education
B.S., North Dakota State University

Pertler, Thomas
Law Enforcement
J.D., Hamline University
B.A., University of Minnesota-Duluth

Peterson, Robin
Corrections
B.S., Wichita State University

Preston, Margaret*
English
M.A., New Mexico State University
B.A., University of Minnesota

Pucel, Mary Gayle
Business/Political Science
M.B.A., St. Cloud State University
M.S., St. Cloud State University
B.S., St. Cloud State University

Reinhard, John
English
M.F.A., University of Michigan
M.A., Eastern Michigan University
B.S., University of Michigan

Ringhand, Mary*
Anishinaabe Language
J.S., University of Minnesota

Rynex, Carolyn
Music
B.A., Trinity College

Sandal, Jay
Biology
M.S., University of Minnesota-Duluth
B.S., University of Minnesota-Duluth

Schwartz, Barry
Music
B.A., Minnesota State University-Moorhead

Shene, Robert
Law Enforcement
B.S., United States Coast Guard Academy

Shultz, Judith
Reading/Coordinator of Center for Academic
Achievement
M.A., University of Northern Iowa
B.A., University of Northern Iowa
A.A., Marshalltown Community College

Snustad, Andrew
Spanish
B.A., University of Montana
M.A., University of Montana

Sorenson, Sara Marie
Speech/English/Theater
B.S., Minnesota State University-Moorhead

Stead, Arnold*
English/Philosophy
Ph.D., University of Missouri-Columbia
M.A., Iowa State University
B.A., Bemidji State

Stocking, Lonnie*
Business
B.S., Bemidji State University

Straub, Wayne
Physical Education

Syrett, Cheryl
Physical Education
B.F.A., University of Minnesota-Duluth

Trebian, Mark
Computer Science
M.S., University of Wisconsin-Stout
B.S., University of Wisconsin-Platteville
B.S., Mount Senario College

Wagner, Phillip
Law Enforcement
B.S., Louisiana College

Walton, Melissa
Child Development
M.S., University of Wisconsin-Superior
B.A., College of St. Scholastica

Wappes, Connie
Mathematics
M.A., University of Phoenix
B.S., Ohio State University

Wendorff, Frances
Mathematics/Reading
M.A., Candidate, University of Wisconsin-Superior
B.A., College of St. Benedict

Weston, Dale*
English
B.S., Hamline University

Wetherbee, Ted
 Mathematics/Computer Science
 M.S., Ohio University
 B.A., University of Minnesota-Duluth

Willoughby, Lynn
 Human Services/Health/Sociology
 M.Ed., University of Wisconsin-Superior
 B.S., University of Wisconsin-Superior

Wobig, Walter
 Law Enforcement

Wold, Amy
 Biology
 M.S., University of Minnesota-Duluth
 B.A., Luther College

Wold, Andrew
 Biology
 M.S., University of Minnesota
 B.A., Luther College

Zauhar, Deb
 Corrections
 B.A., University of Minnesota-Duluth

Zimm, Laura
 Law Enforcement
 J.D., William Mitchell School of Law
 B.A., University of Minnesota-Duluth

Fond du Lac Tribal & Community College Staff

Adamscheck, Dennis
 Network Engineer/Webmaster
 A.A., Fond du Lac Tribal & Community College

Anderson Karene
 Faculty Office Secretary
 Diploma, DAVTI

Beamer, Lori
 Account Clerk
 B.S., St. Cloud State University

Bernhardson, Mark
 Maintenance Foreman

Bohlmann, Brad
 Computer Network Specialist

Broeffle, Candi
 Customized Training Representative
 B.A., Concordia University
 A.A., Fond du Lac Tribal & Community College

Carlson, Bruce
 Director, Housing
 B.S., University of Wisconsin-Superior
 A.A., Fond du Lac Tribal & Community College

Clark, Brian
 Maintenance

Clark, Erica
 Clerical/Intermittent
 A.A. Candidate, Fond du Lac Tribal & Community College

Cresap, Robert
 Director, Visions 2000 Program
 M.S., University of South Dakota
 B.S., Valley City State University

Defoe, Shirley
 Director, International Program

Denny, Janice
 Director, Urban Outreach Program
 B.S., Metropolitan State University
 A.A.S., Minneapolis Community College

Dickenson, Janine
Clerical/Intermittent
A.A., Fond du Lac Tribal & Community College

Eisfeld, Bonnie
College Bookstore Coordinator
A.A., Fond du Lac Tribal & Community College

Fall, Dennis
Maintenance
A.A., Fond du Lac Tribal & Community College

Gassert, Deb
Recruiter

Gelo, Joshua
Maintenance
A.A., Fond du Lac Tribal & Community College

Gordon, Nancy
Admissions Representative
B.A., Concordia University
A.A., Rainy River Community College

Gordon, Wade
Director of Institute of Human Understanding
Ed.D., Candidate, University of Minnesota
Psy.D., Minnesota School of Professional
Psychology
B.S., University of Wisconsin-Superior
A.A., Fond du Lac Tribal & Community College

Hagenah, Paula
Business Office Clerk
A.A.S., Hibbing Community College

Hayes, Robin
Director, Foundation
B.A., College of St. Scholastica

Hiestand-Harri, Peggy
Director, Woodlands Wisdom Project
M.A., University of Minnesota-Duluth
B.S., University of Nebraska

Isham, Donna
Receptionist
A.A.S., Fond du Lac Tribal & Community College

Johnson, Joan
Student Activities Coordinator
A.A., Fond du Lac Tribal & Community College

Kermeen, Jeannie
Customized Training

King, Margaret
Advisor/Student Support Services
B.A., College of St. Scholastica
A.A., Mesabi Range College

Kowalczak, Courtney
Coordinator, St. Louis River-Watch Program
B.S., University of Minnesota-Duluth

Langenbrunner, Erin
Director, Midwest American Indian Business
Leaders
B.S., University of Montana
A.A., Fond du Lac Tribal & Community College

Leno, Leah
Director, College Records and Registration
M.S.M., Colorado Technical University
B.A., Concordia University
A.A., Fond du Lac Tribal & Community College

Libbon, Sarah
Tutor/Student Support Services
B.A., University of Minnesota-Morris

Lind, Louise
Human Resources
A.A., Lake Superior College

Montgomery, Sara
Advisor, Family Education Model
M.Ed., University of Minnesota-Duluth
B.A., College of St. Scholastica

Nicholson, Cassandra
Clerk, Law Enforcement and Customized Training
A.A., Fond du Lac Tribal & Community College

Nyholm, Brian
Tutor/Student Support Services
M.S., University of Wisconsin-Superior
B.A., University of Minnesota-Duluth

Olbekson, Ernie
Maintenance

Otis, Cissy
 Director, Institutional Research
 Health Careers Recruiter
 M.A., Concordia University
 B.A., Concordia University

Paulson, Damien
 Computerized Testing Coordinator/Law
 Enforcement Advisor
 B.A., University of Minnesota-Duluth

Peacock, Mike
 Director, Reservation Programs
 B.A., Bemidji State University

Rauschenfels, Diane
 Librarian Technician
 B.A., College of St. Scholastica
 A.A.S., Lake Superior College

Robinson, Amy
 Financial Aid Officer
 A.A., Fond du Lac Tribal & Community College

Schadewald, Kim
 Information Technology Specialist I
 A.A., Fond du Lac Tribal & Community College

Shelton, Linda
 Director of Student Support Services
 M.S.W. Candidate, University of Minnesota-
 Duluth
 B.S.W., College of St. Scholastica
 A.A., Fond du Lac Tribal & Community College

Soyring, Mary
 Executive Assistant
 B.A., Concordia University

Sullivan, Rae
 Accounting Technician

Sutherland, David
 Director, Financial Aid
 B.S., University of Minnesota
 A.A., Lakewood Community College

Swenson, Rose
 Clerical/Intermittent
 A.A., Fond du Lac Tribal & Community College

Thomas, Gale
 Clerical/Intermittent

Torgerson, Roberta
 Administrative Assistant/Student Support Services
 B.A., Concordia University
 A.A., Fond du Lac Tribal & Community College

Urbanski, Thomas
 Director, Public Information and Admissions

Wappes, Loran
 Information System Engineer
 B.E.E., University of Minnesota

2005–2006 Calendar

Fall Semester

- August 29First day of classes
- September 5Labor Day, campus closed
- October 21Faculty and Staff Duty Day,
no classes
- November 11Veterans' Day, campus closed
- November 24-25Thanksgiving Holiday,
campus closed
- December 16Last day of classes
- December 19-22Final exam period,
end of Fall Semester
- December 26Christmas Day holiday observed,
campus closed
- January 2New Year's Day holiday observed,
campus closed

Spring Semester

- January 9First day of classes
- January 16Martin Luther King, Jr. Day,
campus closed
- February 20Presidents' Day, campus closed
- February 21Faculty Duty Day, no classes
- March 13-17Break Week, no classes
- April 14Faculty Duty Day, no classes
- May 5Peter Dufault Day, no classes
- May 10Last day of classes
- May 11-16Final exam period,
end of Spring Semester
- May 29Memorial Day, campus closed

Summer Session

- June 5First day of classes
- July 4Independence Day, campus closed
- July 26Last day of classes
- July 27-28Final exam period,
end of Summer Session

2006–2007 Preliminary Calendar

(Note: Some changes are likely to occur.)

Fall Semester

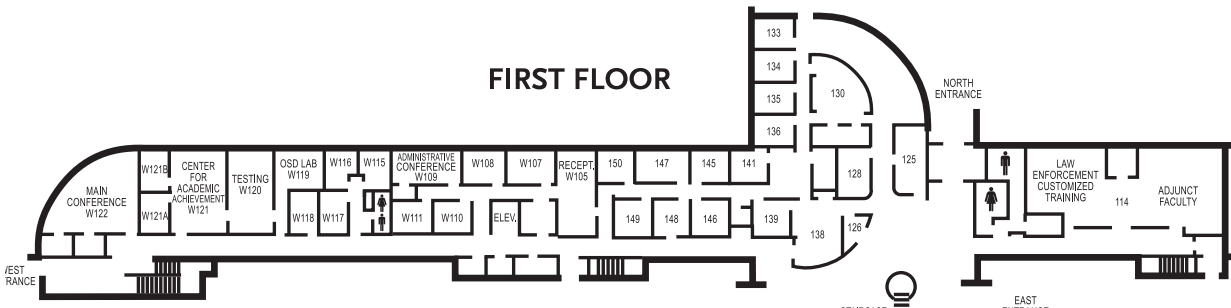
- August 28First day of classes
- September 4Labor Day, campus closed
- October 20Faculty and Staff Duty Day,
no classes
- November 10Veterans' Day observed,
campus closed
- November 23-24Thanksgiving Holiday,
campus closed
- December 15Last day of classes
- December 18-21Final exam period,
end of Fall Semester
- December 25Christmas Day, campus closed
- January 1New Year's Day, campus closed

Spring Semester

- January 8First day of Classes
- January 15Martin Luther King, Jr. Day,
campus closed
- February 19Presidents' Day, campus closed
- February 20Faculty Duty Day, no classes
- March 19-23Break Week, no classes
- May 7Peter Dufault Day, no classes
- May 9Last day of classes
- May 10-15Final exam period,
end of Spring semester
- May 28Memorial Day, campus closed

Summer Session

- June 4First day of classes
- July 4Independence Day, campus closed
- July 25Last day of classes
- July 26-27Final exam period,
end of Summer Session



FIRST FLOOR

East Wing

- 114 Adjunct Faculty Offices
- 114 Continuing Education and Customized Training
- 114 Law Enforcement Program Office

Student Services Area

- 125 Financial Aid Office
- 126 Information Window
- 128 Admissions Office
- 130 Records and Registration Office
- 133-136, 141 Advisors/Counselors

Administration Area

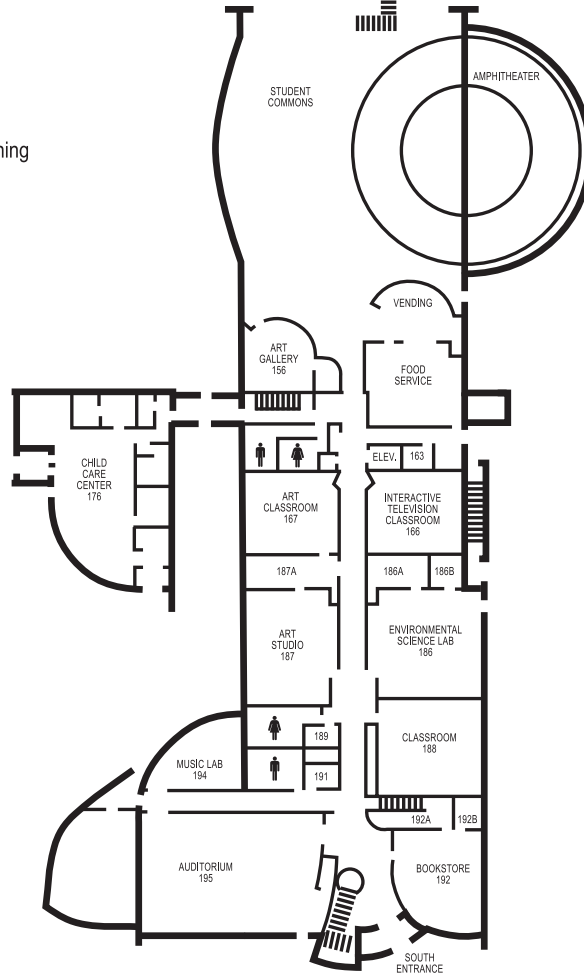
- 138-139 Business Office
- 145 Chief Fiscal Officer
- 146 Institutional Research Office
- 147 Vice President, Student Affairs
- 148 Human Resources Office
- 149 Student Support Services
- 150 Public Information Office

West Wing

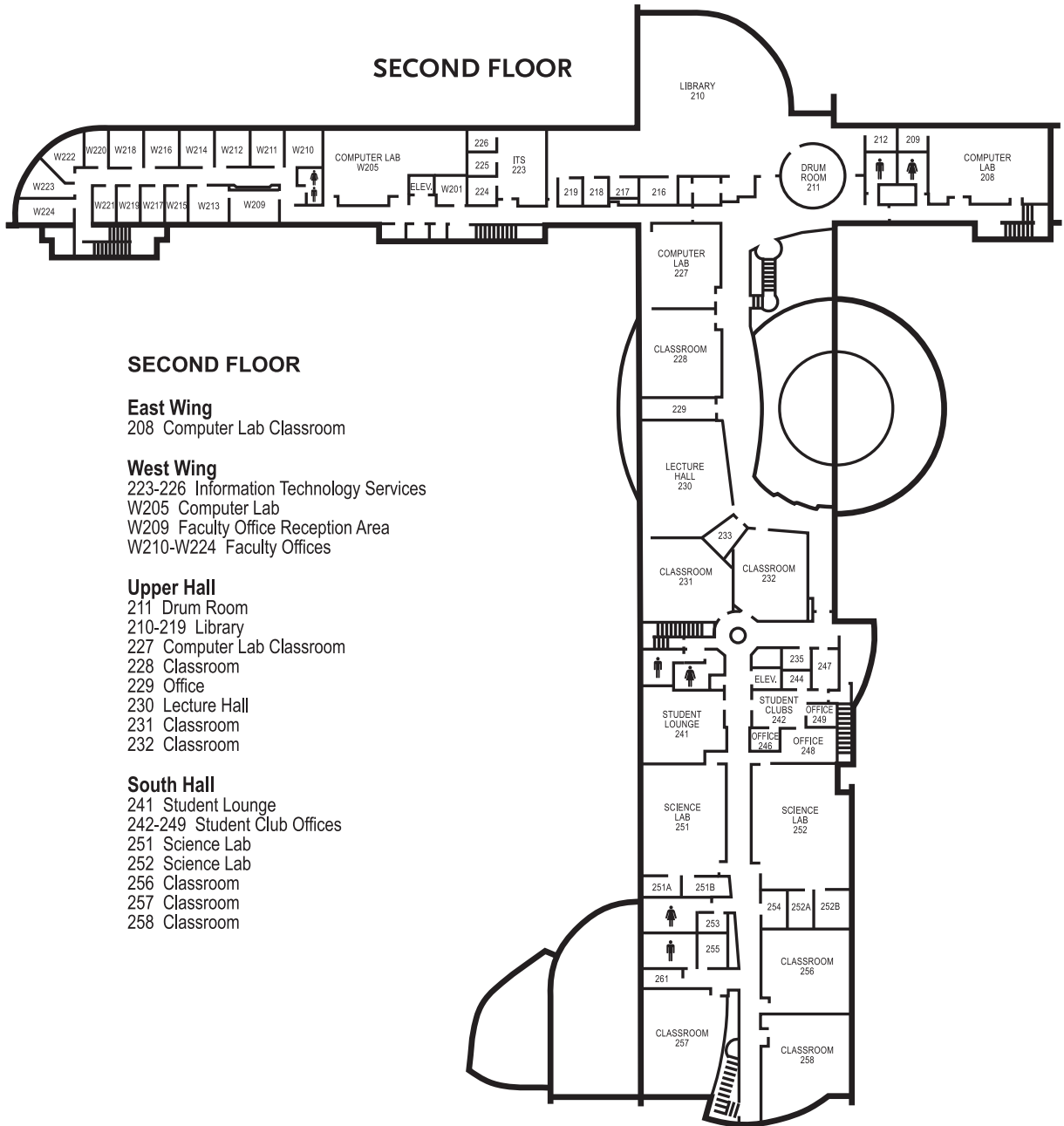
- W105 Administrative Reception Area
- W107 Office of the President
- W108 Vice President, Academic Affairs
- W109 Administrative Conference Room
- W110 Affirmative Action Office
- W111 Institutional Advancement Office
- W115-W117 Staff Offices
- W118 Career Resource Center
- W119 Assistive Technology Lab
- W120 Testing Center
- W121 Center for Academic Achievement
- W122 Main Conference Room

South Hall

- 156 Art Gallery
- 166 Interactive Television Classroom
- 167 Art Classroom
- 176 Child Care Center
- 186 Environmental Science Lab
- 187 Art Studio
- 188 Classroom
- 192 College Bookstore
- 194 Music Lab
- 195 Auditorium



SECOND FLOOR



SECOND FLOOR

East Wing

208 Computer Lab Classroom

West Wing

223-226 Information Technology Services

W205 Computer Lab

W209 Faculty Office Reception Area

W210-W224 Faculty Offices

Upper Hall

211 Drum Room

210-219 Library

227 Computer Lab Classroom

228 Classroom

229 Office

230 Lecture Hall

231 Classroom

232 Classroom

South Hall

241 Student Lounge

242-249 Student Club Offices

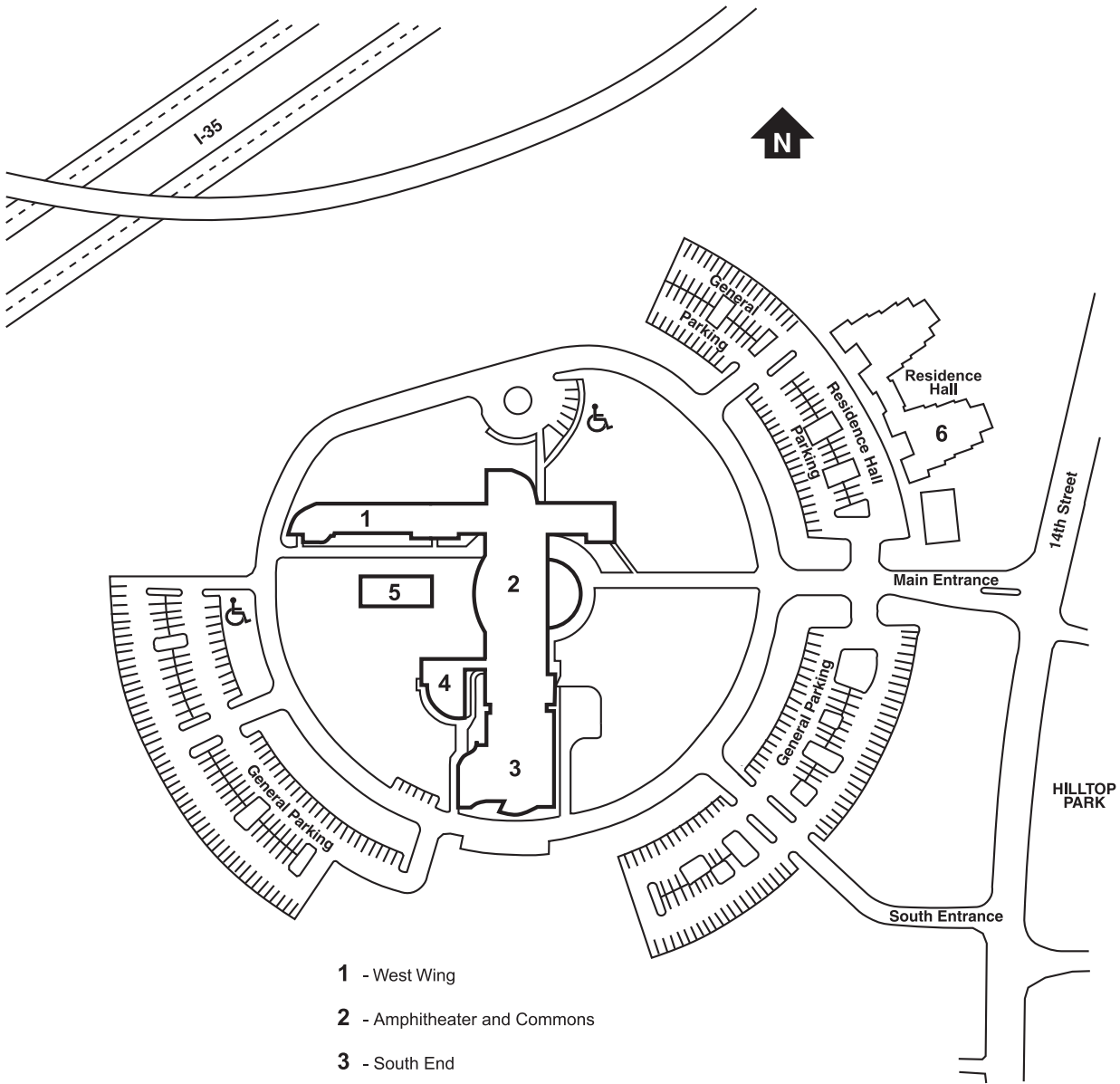
251 Science Lab

252 Science Lab

256 Classroom

257 Classroom

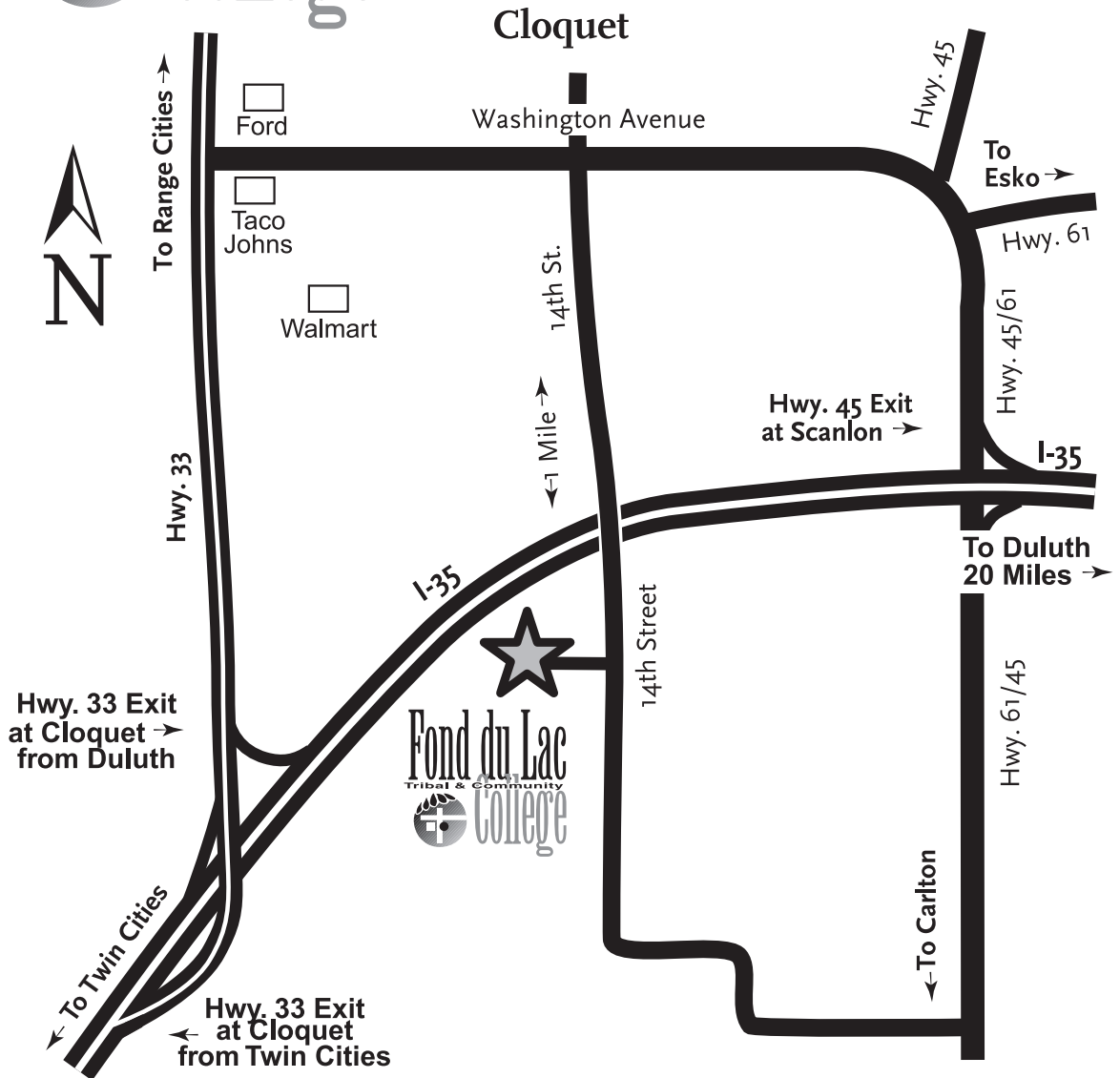
258 Classroom



- 1 - West Wing
- 2 - Amphitheater and Commons
- 3 - South End
- 4 - Childcare Center
- 5 - Center of Excellence
- 6 - Residence Hall



Directions to:
 Fond du Lac Tribal & Community College
 2101 14th Street • Cloquet, MN 55720
 (218) 879-0800 • TTY (218) 879-0805
 1-800-657-3712 • Fax (218) 879-0814



Fond du Lac Tribal & Community College is located in Cloquet, approximately 130 miles north of Minneapolis/St. Paul, and 20 miles southwest of Duluth. From Interstate 35, exit on Highway 33 north into Cloquet. Follow Highway 33 approximately one mile and turn right onto Washington Avenue. Follow Washington Avenue to 14th Street, which is the first four-way stop sign intersection. Turn right onto 14th Street and follow approximately one mile to the college campus, which is on the right-hand side of the street.

